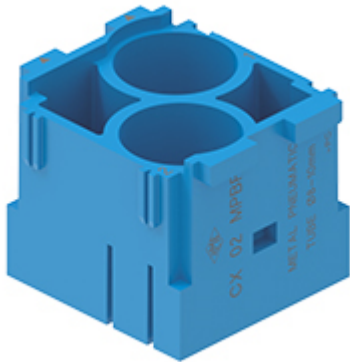


Part number

CX 02 MPBF



Female modular insert, Mixo series, for pneumatic contacts, 1 module, with 2 seats for tube diameter 8,0-10 mm

Product description

| | |
|------------------------|--|
| Product type | Modular insert |
| Series | Mixo |
| Connection type | Pneumatic |
| Gender | |
| N. of poles | 2 poles |
| Size | 2 modules |
| Specification | With 2 seats for tube diameter 8,0-10 mm |

Further technical details

| | |
|---|---|
| Mating cycles | ≥ 500 ≥ 10.000 (HNM MIXO frames and enclosures) |
| Insulation resistance | ≥ 10 G Ω |
| Weight | 0,17 g |
| Operating temperature range (min, max) | -40°C ... +80°C |
| UL 94 flammability rating | V-0 |

Material properties

| | |
|------------------------------|--------------------|
| Main material | Polycarbonate (PC) |
| Colour | RAL 5015 blue |
| RoHs conformity | Compliant |
| China RoHs - EFUP | E |
| REACH SVHC substances | No |

General ordering information

| | |
|-------------------|---------------|
| EAN13 code | 8015747193320 |
| eCl@ss 8.1 | 27440205 |
| ETIM 7.0 | EC000438 |

Packaging Information

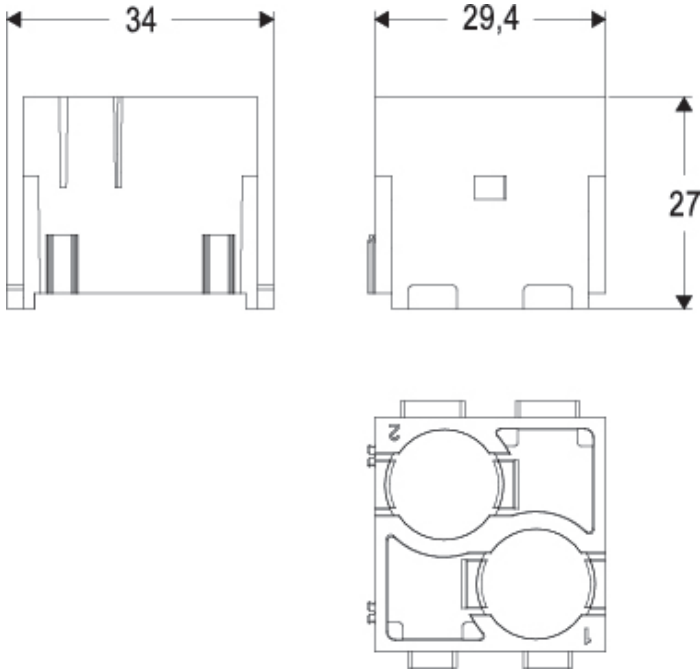
| | |
|----------------------------------|----------------------|
| Packaging length | 350,00 mm |
| Packaging height | 105,00 mm |
| Packaging width | 145,00 mm |
| Packaging volume | 5,33 dm ³ |
| Packaging description | Carton box |
| Packaging quantity | 60 Pcs |
| Packaging EAN code | 8015747193344 |
| Sub-packaging length | 35,00 mm |
| Sub-packaging height | 40,00 mm |
| Sub-packaging width | 155,00 mm |
| Sub-packaging volume | 0,22 dm ³ |
| Sub-packaging description | Carton tray |
| Sub-packaging quantity | 5 Pcs |
| Sub-packaging EAN barcode | 8015747193368 |

Part number

CX 02 MPBF



Catalogue drawings



Notes

AVAILABLE FROM: JUNE 2023

- working temperature range - 40 °C + + 80 °C

Dimensions shown in mm are not binding and may be changed without notice.

Warnings:

1) Please note that the VDE-Directives do not allow the combination of electrical and liquid connections within the same connector for clear safety reasons.

2) CRM/F CX code pins and guides must be used for pneumatic contacts modules.

These pins also provide coding if pneumatic contacts modules are used exclusively.

Use of units for pneumatic contacts

- identical male and female modular units
- pneumatic contacts for pressure values up to 8 bar, for use with clean and dry compressed air
- contacts for gas and liquids on request (see warning)
- use of tubes with \varnothing 1.6 - 3 - 4 and 6 mm, and possible replacement of tubes with assembled units
- possibility of using tubes with different diameters in the same modular unit
- female contacts with or without closing valve