



Your future's safe!



MZERO

stand-alone safety integrated controller

short form



A compact and configurable safety controller

Bringing full configuration capabilities at the cost of a



Main features

- 16 safety inputs
- 4 inputs for Start/Restart interlock, EDM or single input devices
- 4 pairs OSSD safety outputs (PNP 400 mA)
- 4 SIL 1/PL c status outputs (PNP 100 mA)
- 4 test outputs
- 64 logical operators

Part numbers

MZERO 16.4 1100005 (screw terminal blocks)
MZERO 16.4 C 1100205 (clamp terminal blocks)

Key features

MZERO is a stand-alone configurable safety hub able to manage all safety functions of a machinery or a plant, allowing cost reductions and minimal wiring.

MZERO can manage safety sensors and signals such as

Light curtains, photocells, laser scanners, emergency stops, electromechanical switches, guard-lock door switches, magnetic switches, RFID switches, mats and edges, two-hand controls and hand grip switches.

Advantages

Reducing the number of devices and wiring used and, therefore, the overall size of the project.

Speeding-up control panel construction.

Allows tamper-proof system configurations.

All logic is configured through a graphic interface. No more laborious wiring is needed as with traditional solutions.

A lower number of electromechanical components also means a better Performance Level and, therefore, a higher Safety Level.

The project report provides the actual values of PFH, DCavg and MTTFd according to EN 13849-1 and EN 62061.

stand-alone safety integrated controller

reersafety.com

Controller

standard safety relay

Additional safety relay output units

The MZERO can be hard wired to the MR units to add safety relay outputs to the system



Safety relay output units

Safety relays with guided contacts: 2 (MR2), 4 (MR4), 8 (MR8*)

NO contacts: 2 (MR2), 4 (MR4), 8 (MR8)

NC contacts: 1 (MR2), 2 (MR4), 4 (MR8) (250 VAC 6 A)

NC contacts for EDM feedback: 1 (MR2), 2 (MR4), 4 (MR8)

* MR8 allows series connection between multiple modules

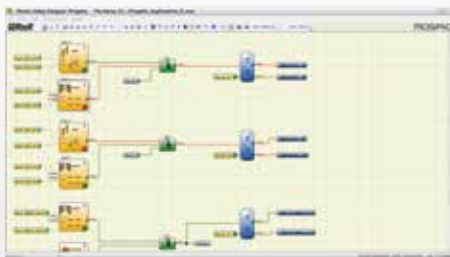
MZERO

MZERO Safety Designer

Easy-to-use designer software included with the MZERO unit.

Drag & Drop functionality allows to easily create all logic scenarios in a machine directive compliant environment.

Built-in Monitor



Built-in Simulator



Drag & Drop

User-friendly

Real-time monitor

Design validation

Simulation

Security password

Reports and log files

Project information

SAFETY LEVEL

SIL 3

SIL 3 - SILCL 3
PL e - Cat. 4

Approvals



Pending

roller

MZERO



Your future's safe!

Oltre 60 anni di qualità ed innovazione

Fondata a Torino nel 1959, ReeR si distingue per il forte contributo all'innovazione e alla tecnologia.

La costante crescita attraverso gli anni consente a ReeR di affermarsi come punto di riferimento globale nel settore della sicurezza per l'automazione industriale.

La Divisione Sicurezza è infatti oggi un leader mondiale nello sviluppo e produzione di sensori optoelettronici di sicurezza e controllori di sicurezza.

ReeR è certificata ISO 9001, ISO 14001 e ISO 45001.



ReeR SpA
Via Carcano, 32
10153 Torino

T 011 248 2215
F 011 859 867

www.reersafety.it | info@reer.it



Edizione 1 - Rev. 1.0
Febbraio 2021
8946072
Brochure MZERO - Italiano

Stampato in Italia

