

# QG series



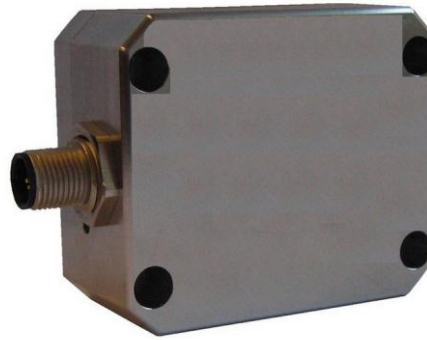
QG76-SD-030H-CAN-CM

**Inclination sensor**  
2 axis horizontal mounting

Output  
CANopen

Supply voltage  
10 - 30V dc

Measuring range  
 $\pm 30^\circ$



CANopen



## QG76-SD-030H-CAN-CM

Housing
Dimensions
Mounting
Ingress Protection (IEC 60529)
Relative humidity
Weight
Supply voltage
Polarity protection
Current consumption
Operating temperature
Storage temperature
Measuring range
Centering function
Frequency response (-3dB)
Accuracy
Offset error
Non linearity
Sensitivity error
Resolution
Temperature coefficient
Max mechanical shock
CAN interface (hardware)
CAN communication profile
Baud rate
Node Id
TPDO
Event time
Sync mode
Heartbeat
Programming options
Output format
Temperature compensation
Filtering
Modes of operation
Integrated termination resistor
Boot up time

## General specifications v20140723

Stainless steel
70x60x33 mm
4x M4x25 mm stainless steel pozidrive screws (optional: 2x Ø4mm positioning pins)
IP67
0 - 100%
ca. 700 gr
10 - 30V dc
Yes
$\leq 50$ mA
-40 .. +85°C
-40 .. +85°C
$\pm 30^\circ$
Yes (CANout 0 = 0°), range: $\pm 5^\circ$
10 Hz
overall 0,04° typ.
$< \pm 0,03^\circ$ typ. ( $< \pm 0,08^\circ$ max.) after centering
$< \pm 0,02^\circ$ typ. ( $< \pm 0,07^\circ$ max.)
$< \pm 0,02\%$ typ. ( $< \pm 0,07\%$ max.)
0,01°
$\pm 0,005^\circ/\text{K}$ typ.
20.000g
CAN 2.0 A and B according to ISO 11898-1 & ISO 11898-2
CANopen, CiA301 V4.2.0 & EN 50325-4
125 kbit/s (default), 250 kbit/s, 500 kbit/s, 1Mbit/s 01h (range: 01h - 7Fh) TPDO1: 181h (for Node ID=01h) TPDO1: 5 - 500 ms (default: 100 ms) On/off (default: off) On/off (default: on, 2s)
Baudrate, Node Id, Event time, Sync mode, Heartbeat, Output format Integer: -3000 to +3000 (PDO1:X=byte2,1;Y=byte4,3) Yes Input filter enabled, output filter disabled Event mode, Sync-mode Optional, default: no
$< 1$ s

