

Part number

# MAP 16 CP240



Surface mounting housing, C-TYPE series, with 4 pegs, M40 x 2 cable entry, size "77.27", high construction, with plastic cover

Product description		Material properties	
Product type	Surface mounting housing	Other materials	Gasket: NBR
Series	C-TYPE	Colour	RAL 7040 grey
Closing type	With 4 pegs	RoHs conformity	Compliant
Size	Size 77.27	China RoHs - EFUP	E
Cable entry	With cable entry M40 x 2	REACH SVHC substances	No
Specification	High construction, with plastic cover	Approvals / Standards	
Technical data		Certifications	CQC, DNV, BV
IP degree of protection	IP65	UL	ECBT2
Further technical details		cUL	ECBT8
Weight	375,00 g	General ordering information	
Operating temperature range (min, max)	-40°C...+125°C	EAN13 code	8015747051385
		eCl@ss 8.1	27440202
		ETIM 7.0	EC000437
Packaging Information			
Packaging length	475,00 mm	Packaging height	220,00 mm
Packaging width	175,00 mm	Packaging weight	4,29 kg
Packaging volume	18,29 dm³	Packaging description	Carton box
Packaging quantity	10 Pcs	Packaging EAN code	8015747244626
Sub-packaging weight	2,15 kg	Sub-packaging description	Plastic packaging
Sub-packaging quantity	5 Pcs	Sub-packaging EAN barcode	8015747101219

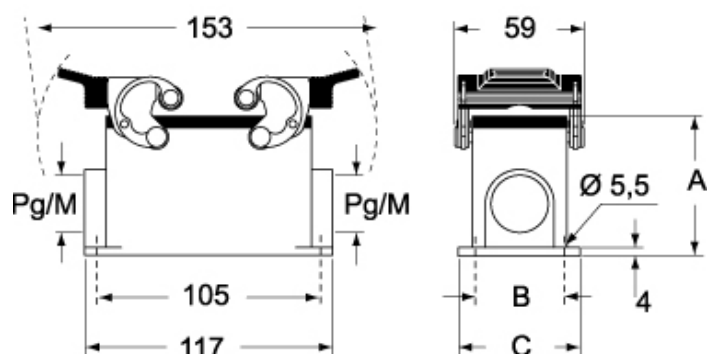
Part number

# MAP 16 CP240

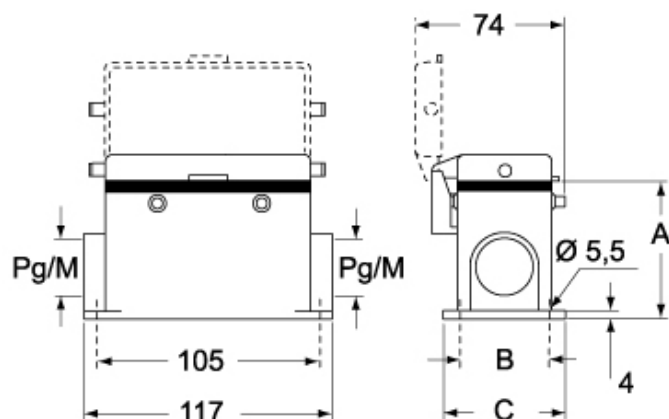


Catalogue drawings

## CHP CAP - MHP MAP



## CHP CS/CP CAP CS/CP - MHP CS/CP MAP CS/CP



	<b>A</b>
<b>CHP / MHP</b>	63
<b>CAP / MAP</b>	77
<b>CHP CS / MHP CS</b>	63
<b>CAP CS / MAP CS</b>	77
<b>CHP CP / MHP CP</b>	63
<b>CAP CP / MAP CP</b>	77

## Notes

Dimensions shown in mm are not binding and may be changed without notice.