

Part number

# MGPE 16.40



Surface mounting housing, E-Xtreme® IP68 series, for 2 screws, M40 cable entry, size "77.27"

#### Product description

<b>Product type</b>	Surface mounting housing
<b>Series</b>	E-Xtreme® IP68
<b>Closing type</b>	With 2 screws
<b>Size</b>	Size 77.27
<b>Cable entry</b>	With cable entry M40

#### Technical data

<b>IP degree of protection</b>	IP66 / IP68 / IP69
--------------------------------	--------------------

#### Further technical details

<b>Operating temperature range (min, max)</b>	-40°C...+125°C
---	----------------

#### Material properties

<b>Other materials</b>	Gasket: FKM
<b>Colour</b>	RAL 7016 grey
<b>RoHs conformity</b>	Compliant
<b>China RoHs - EFUP</b>	E
<b>REACH SVHC substances</b>	No

#### Approvals / Standards

<b>Certifications</b>	CQC, DNV, BV
<b>UL</b>	ECBT2
<b>cUL</b>	ECBT8

#### General ordering information

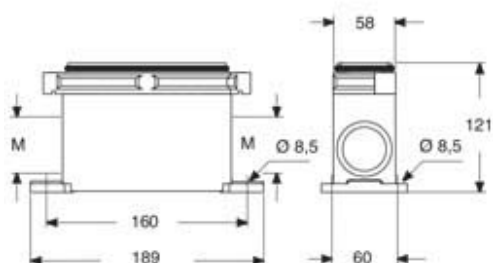
<b>EAN13 code</b>	8015747254526
<b>eCl@ss 8.1</b>	27440202
<b>ETIM 7.0</b>	EC000437

Part number

# MGPE 16.40



## Catalogue drawings



---

## Notes

Dimensions shown in mm are not binding and may be changed without notice.

---