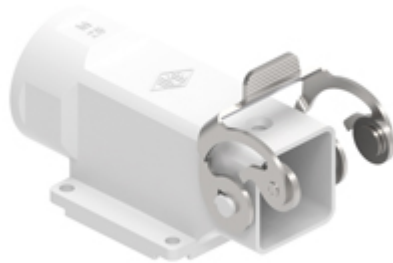


Part number

MKX AP25



Angled Surface mounting housing, CK series,
with 1 stainless steel lever, M25 cable entry,
size "21.21", fixing by 4 screws

Product description	
Product type	Angled surface mounting housing
Series	CK
Closing type	With 1 lever
Size	Size "21.21"
Cable entry	With cable entry M25
Specification	Bulkhead hole closed
Technical data	
IP degree of protection	IP44 - IP66 / IP67 / IP69 with CKR 65
Further technical details	
Weight	25,50 g
Operating temperature range (min, max)	-40°C...+125°C

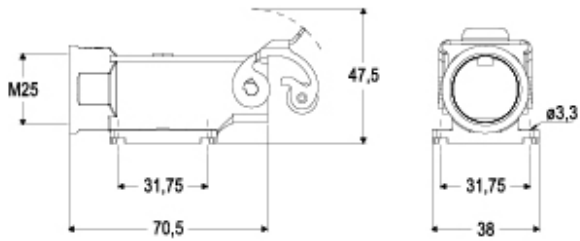
Material properties	
Other materials	Lever: Stainless steel
Colour	RAL 7035 grey
RoHs conformity	Compliant
China RoHs - EFUP	E
REACH SVHC substances	No
Approvals / Standards	
Certifications	CQC, DNV, BV
General ordering information	
EAN13 code	8015747043601
eCl@ss 8.1	27440202
ETIM 7.0	EC000437
Packaging Information	
Packaging length	375,00 mm
Packaging height	230,00 mm
Packaging width	205,00 mm
Packaging weight	2,86 kg
Packaging volume	17,68 dm³
Packaging description	Carton box
Packaging quantity	100 Pcs
Packaging EAN code	8015747224765
Sub-packaging weight	0,29 kg
Sub-packaging description	Carton box
Sub-packaging quantity	10 Pcs
Sub-packaging EAN barcode	8015747303460

Part number

MKX AP25



Catalogue drawings



Notes

Dimensions shown in mm are not binding and may be changed without notice.
